

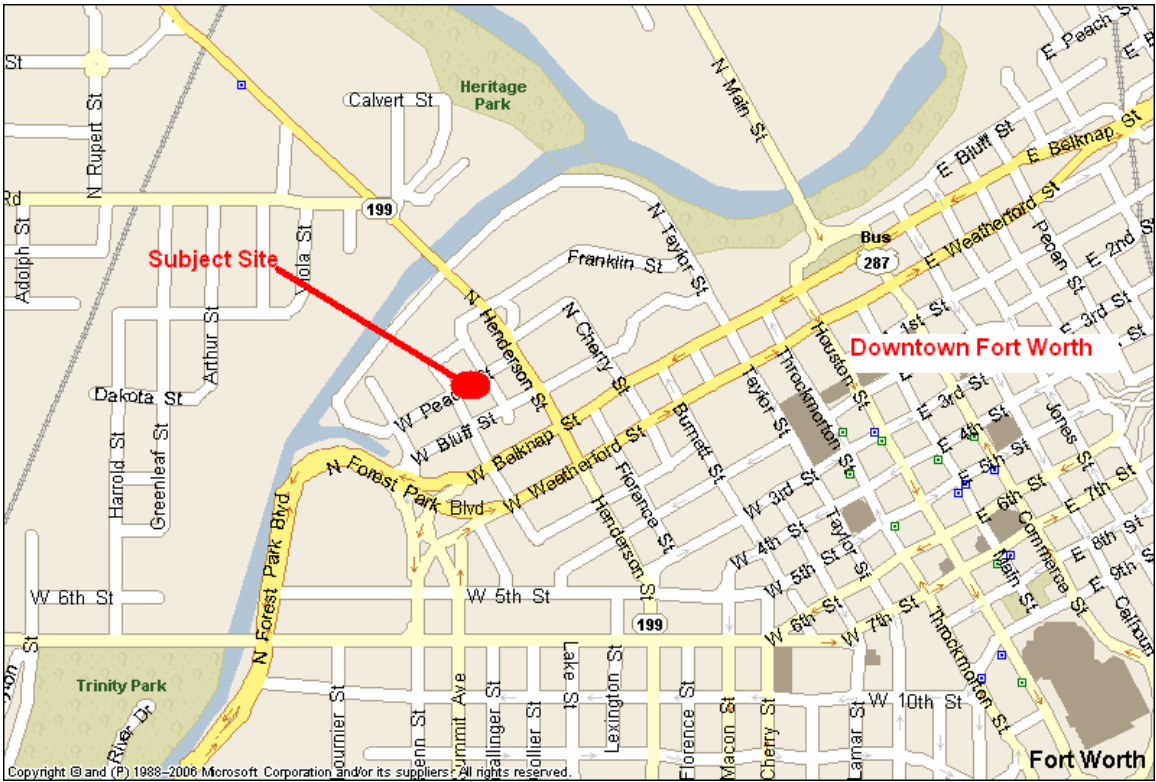
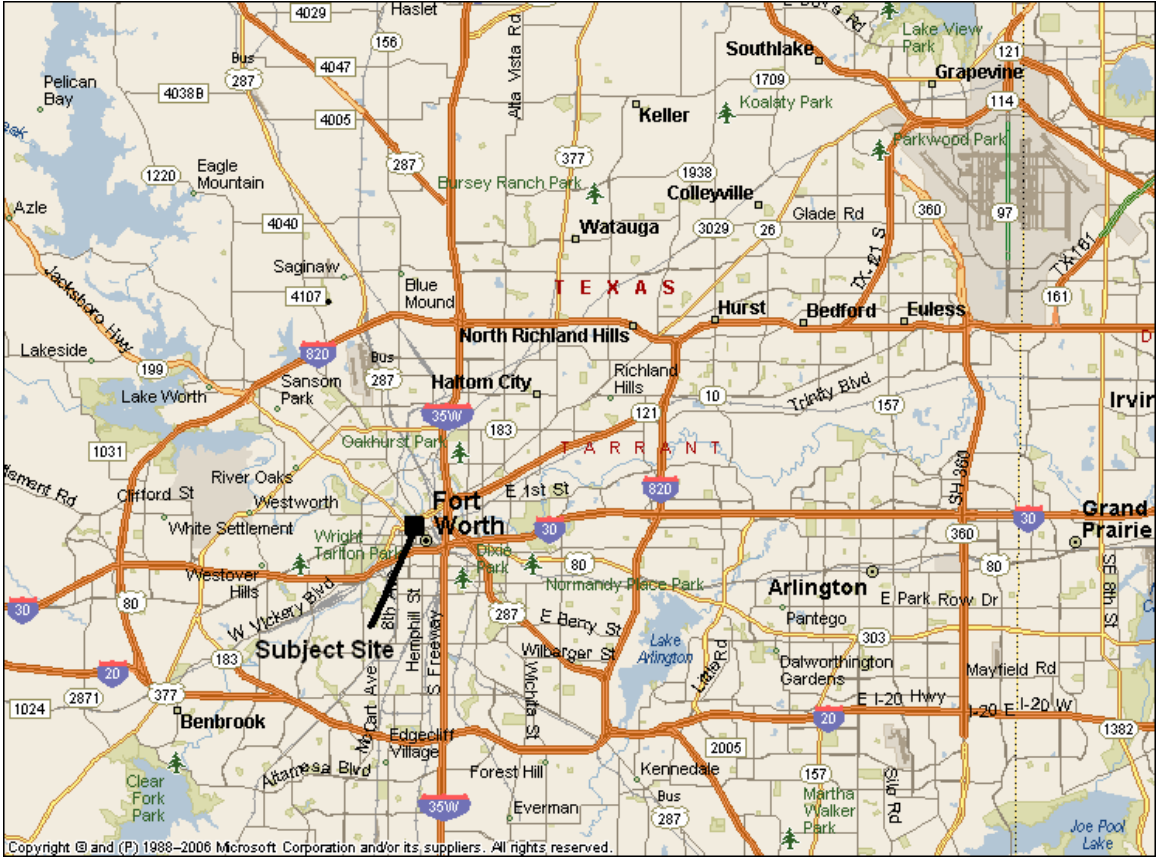
**Downtown Fort Worth  
Multi-Family Site  
Trinity River Vision Area**

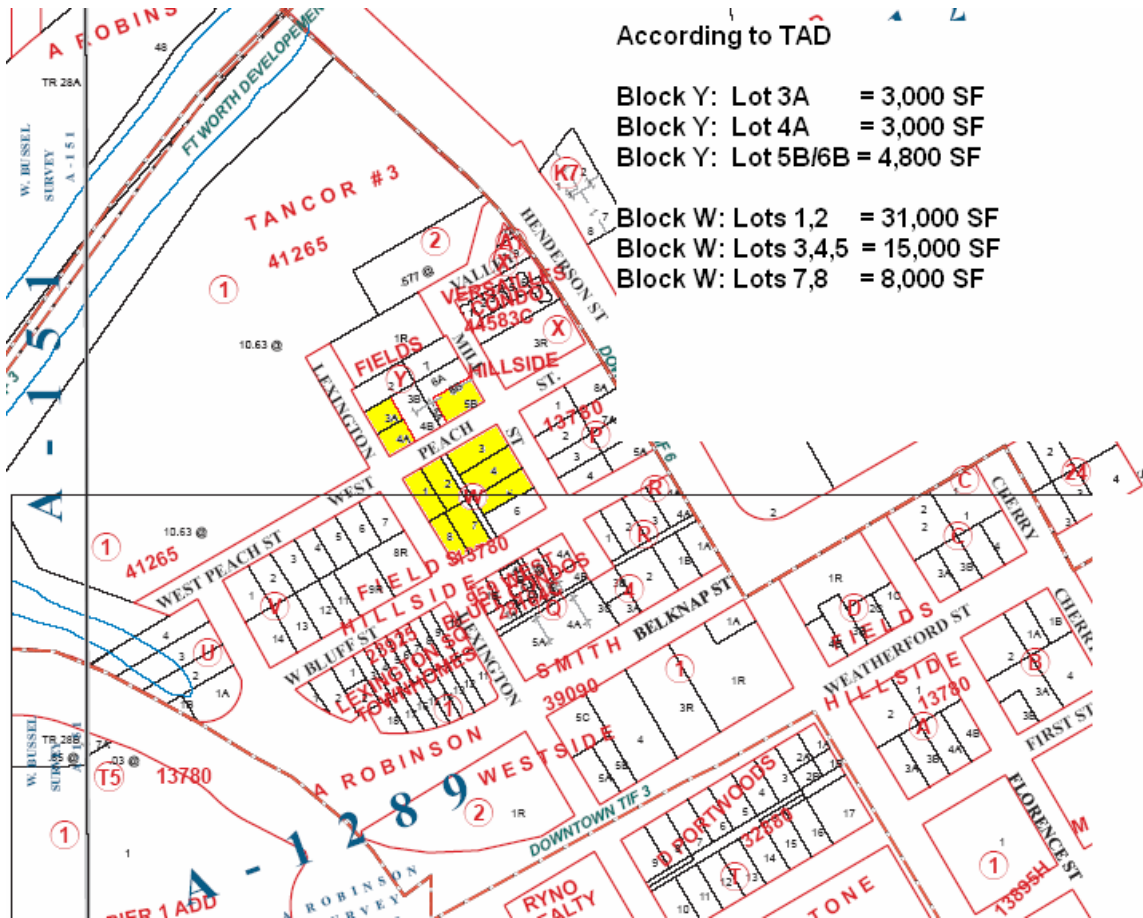
*The subject site is located at one of the two main entrances of the Trinity River Vision Project area.*

<b>Location:</b>	The intersections of Lexington Ave., Bluff St. and Peach St in the NWQ of Belknap St. and Henderson St.
<b>Land:</b>	Between 10,800 SF to 63,000 SF
<b>Current Use:</b>	Currently used as a church.
<b>Zoning:</b>	TU-N-3 (Trinity Uptown District)
<b>Utilities:</b>	All at site
<b>Price:</b>	\$29.00 per SF

**Bill Tinsley**  
**Ellis & Tinsley, Inc.**  
**817-456-5000**  
**btinsley@ellis-tinsley.com**

The information furnished in this package is from sources deemed reliable, but is not guaranteed by Ellis & Tinsley, Inc., and is subject to change in price, correction, errors and omissions, prior sale or withdrawal without notice. Ellis & Tinsley, Inc. has not inspected or investigated this property for potential environmental problems.

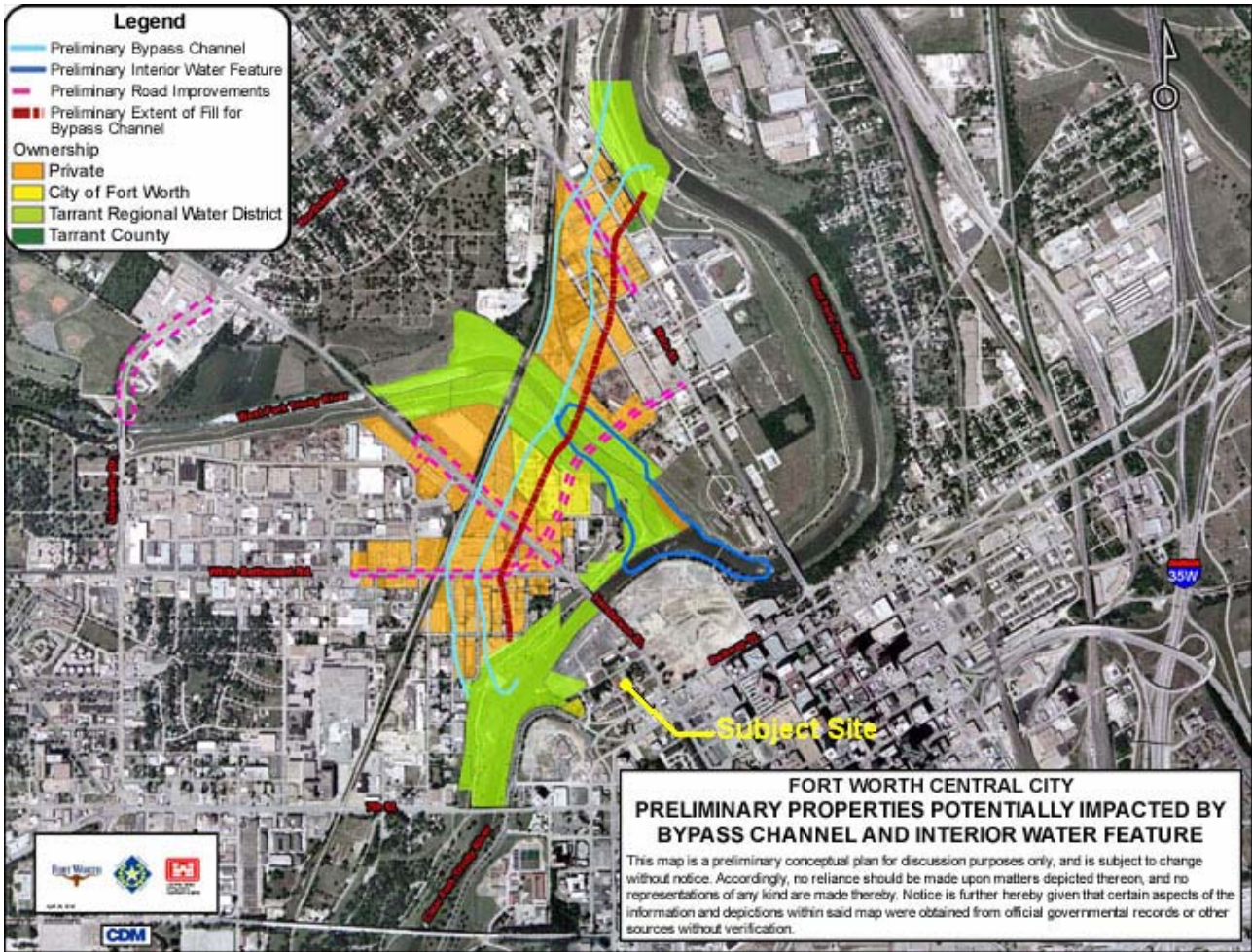




According to TAD

Block Y: Lot 3A = 3,000 SF  
 Block Y: Lot 4A = 3,000 SF  
 Block Y: Lot 5B/6B = 4,800 SF

Block W: Lots 1,2 = 31,000 SF  
 Block W: Lots 3,4,5 = 15,000 SF  
 Block W: Lots 7,8 = 8,000 SF



**Location of subject site in proximity to the Trinity Uptown Project.**

